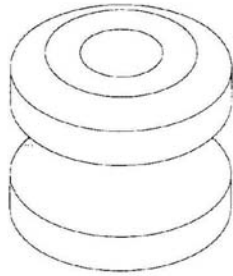
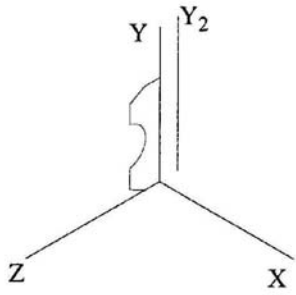
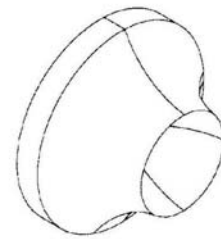
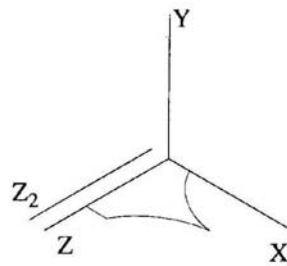


Quiz #

1a. For the problems below, indicate the axis about which the 2-D shape was revolved to obtain the given solid.

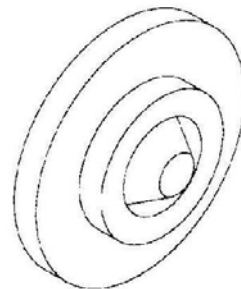
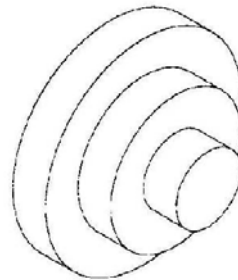
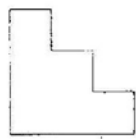


Revolved About _____

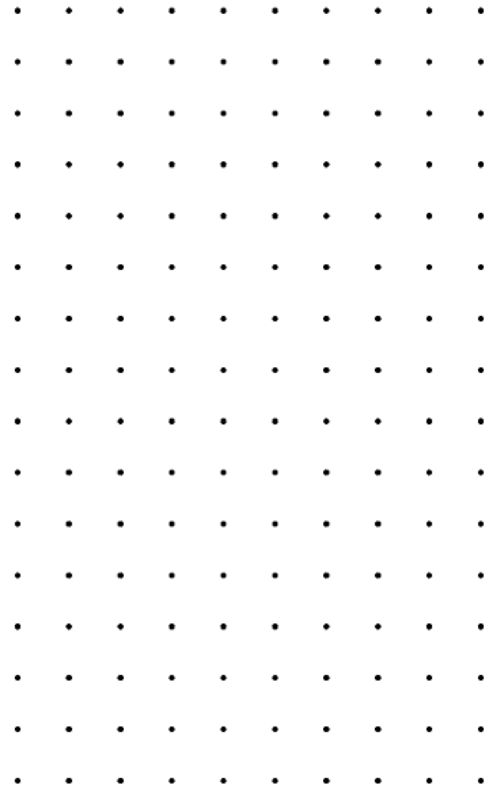
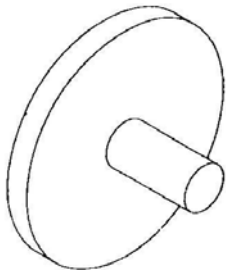
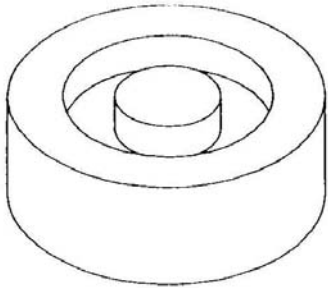


Revolved About _____

1b. For the problems below, **draw the axis** (on/near the 2-D shape) about which the 2-D shape was revolved to obtain the given solid.



2. For the objects below, draw the 2-D shape that was revolved to make the following objects. You may sketch the shape in either the blank area next to the object or use the dot paper.



3. For the objects below, circle the 2-D shape that was revolved to create the object.

